



Cable ID: F/UTP CAT6A 23AWG PVC

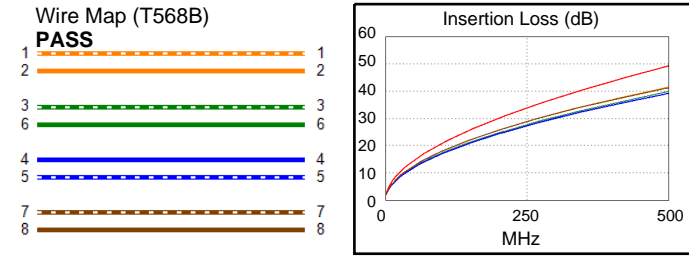
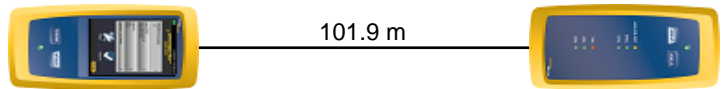
Test Limit: TIA Cat 6A Channel
Limits Version: V7.11
Date / Time: 09/22/2025 07:56:10 AM
Operator: HQY
Headroom 4.1 dB (NEXT 1,2-7,8)
Cable Type: Cat 6A F/UTP
NVP: 68.8%

Main: Versiv
S/N: 21200117
Software Version: V6.13 Build 2
Calibration Date: 02/01/2025
Adapter: DSX-5000 (DSX-CHA004)
S/N: 21252413

Test Summary: PASS

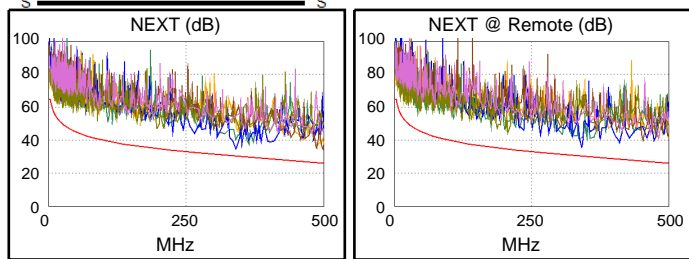
Remote: Versiv
S/N: 21200257
Software Version: V6.13 Build 2
Calibration Date: 02/01/2025
Adapter: DSX-5000R (DSX-CHA004)
S/N: 21252439

Length (m), Limit 100.0	[Pair 4,5]	101.9
Prop. Delay (ns), Limit 555	[Pair 1,2]	541
Delay Skew (ns), Limit 50	[Pair 1,2]	47
Resistance (ohms)	[Pair 7,8]	15.11
Insertion Loss Margin (dB)	[Pair 1,2]	7.8
Frequency (MHz)	[Pair 1,2]	500.0
Limit (dB)	[Pair 1,2]	49.3

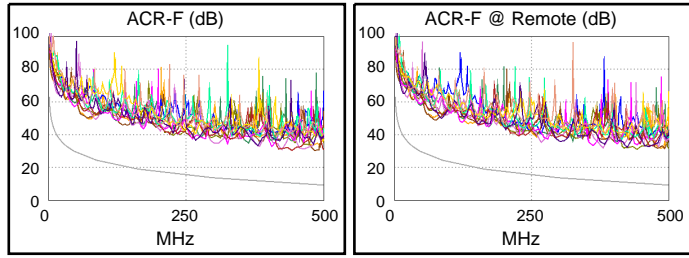


Worst Case Margin Worst Case Value

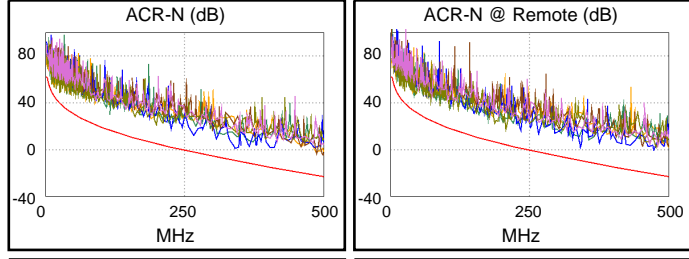
PASS	MAIN	SR	MAIN	SR
Worst Pair	1,2-7,8	1,2-7,8	3,6-4,5	1,2-7,8
NEXT (dB)	4.1	5.3	7.8	5.3
Freq. (MHz)	346.0	341.0	500.0	341.0
Limit (dB)	30.4	30.6	26.1	30.6
Worst Pair	1,2	1,2	3,6	1,2
PS NEXT (dB)	5.8	7.3	9.1	7.3
Freq. (MHz)	346.0	341.0	500.0	341.0
Limit (dB)	27.5	27.6	23.2	27.6



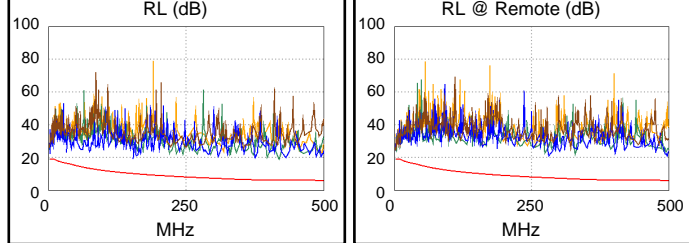
PASS	MAIN	SR	MAIN	SR
Worst Pair	4,5-3,6	3,6-4,5	4,5-3,6	3,6-4,5
ACR-F (dB)	19.0	19.5	19.0	19.5
Freq. (MHz)	421.0	421.0	421.0	421.0
Limit (dB)	10.8	10.8	10.8	10.8
Worst Pair	3,6	4,5	3,6	3,6
PS ACR-F (dB)	21.0	22.2	21.0	22.4
Freq. (MHz)	421.0	421.0	421.0	479.0
Limit (dB)	7.8	7.8	7.8	6.7



N/A	MAIN	SR	MAIN	SR
Worst Pair	1,2-7,8	3,6-7,8	3,6-4,5	1,2-7,8
ACR-N (dB)	10.2	11.1	17.9	20.8
Freq. (MHz)	346.0	10.1	500.0	473.0
Limit (dB)	-9.9	50.0	-23.2	-21.1
Worst Pair	3,6	3,6	3,6	1,2
PS ACR-N (dB)	11.5	12.4	18.5	23.7
Freq. (MHz)	10.8	3.1	500.0	489.0
Limit (dB)	46.8	58.3	-26.1	-25.2



PASS	MAIN	SR	MAIN	SR
Worst Pair	4,5	4,5	3,6	4,5
RL (dB)	8.0	6.9	12.8	14.9
Freq. (MHz)	3.4	3.4	419.0	497.0
Limit (dB)	19.0	19.0	6.0	6.0



Compliant Network Standards:
 10BASE-T 100BASE-TX 100BASE-T4
 1000BASE-T 2.5GBASE-T 5GBASE-T
 10GBASE-T ATM-25 ATM-51
 ATM-155 100VG-AnyLan TR-4
 TR-16 Active TR-16 Passive